

ENGINEERING SERVICES OUTSOURCING BY KENT ENGINEERS (PVT) LTD

We are a premier engineering service provider for top notch global brands, offering Outsourcing of Engineering Process for your company.

www.kentengineers.net

ABOUT KENT

Kent Engineers (Pvt) Ltd brings you 30 years of Global Engineering excellence specialized in Mechanical Electrical and Public Health engineering services.

We bring the state-of-art techniques to deliver the best solutions accompanied by highest level of service quality and commit ourselves to meet the deadlines within budget. The consistency is evident across every job assigned, regardless of the size. That's the unique culture Kent operates within.

We have exposure with overseas engineering practices such as British, Australian and Japanese and have been a part of some of the prestigious projects for global brands such as Ritz Carlton, Accor, Pullman and Hilton.

Kent is an ISO 9001, ISO 45001 and EMS 14001 certified company and also familiar with BS, JIS, EU and AU engineering standards.

Our Engineering Services Outsourcing Department consists of over 50 highly qualified and experienced Engineers and Draftsman. We are expertise in 3D modeling for MEP services and have catered to overseas markets such as Australia and Maldives. Project delivery procedure go through a thorough QA/QC procedure before submitting the final drawings to client.

We use leading software to give you the best possible output for a highly competitive value.

Let us be your Remote Engineering Partner who will take care of your engineering drafting while you concentrate on adding more value to your business...!!

FEW PROJECTS WE HAVE UNDERTAKEN AS A CONTRACTOR



Altair – Sri Lanka



Pullman Mamutta - Maldives



Ritz Carlton - Maldives



Double Tree by Hilton – Sri Lanka

GLOBAL BRANDS WE HAVE WORKED WITH



THE RITZ-CARLTON®



ACCOR



Hilton
HOTELS & RESORTS

ENGINEERING SERVICES OUTSOURCING

We mainly provide engineering drafting services for companies who are willing to outsource their Engineering Services in the areas of Mechanical, Electrical and Public Health Engineering. We have a vast exposure in to MEP in Building and Infrastructure construction work for over 30 years.

2D/3D Engineering Drafting

Mechanical Design Drawings

Electrical Design Drawings

PHE Design Drawings

BIM Modeling

MEP Clash Detection

Construction Drawings

Coordination Drawings

As-Built Drawings

Engineering Documentation

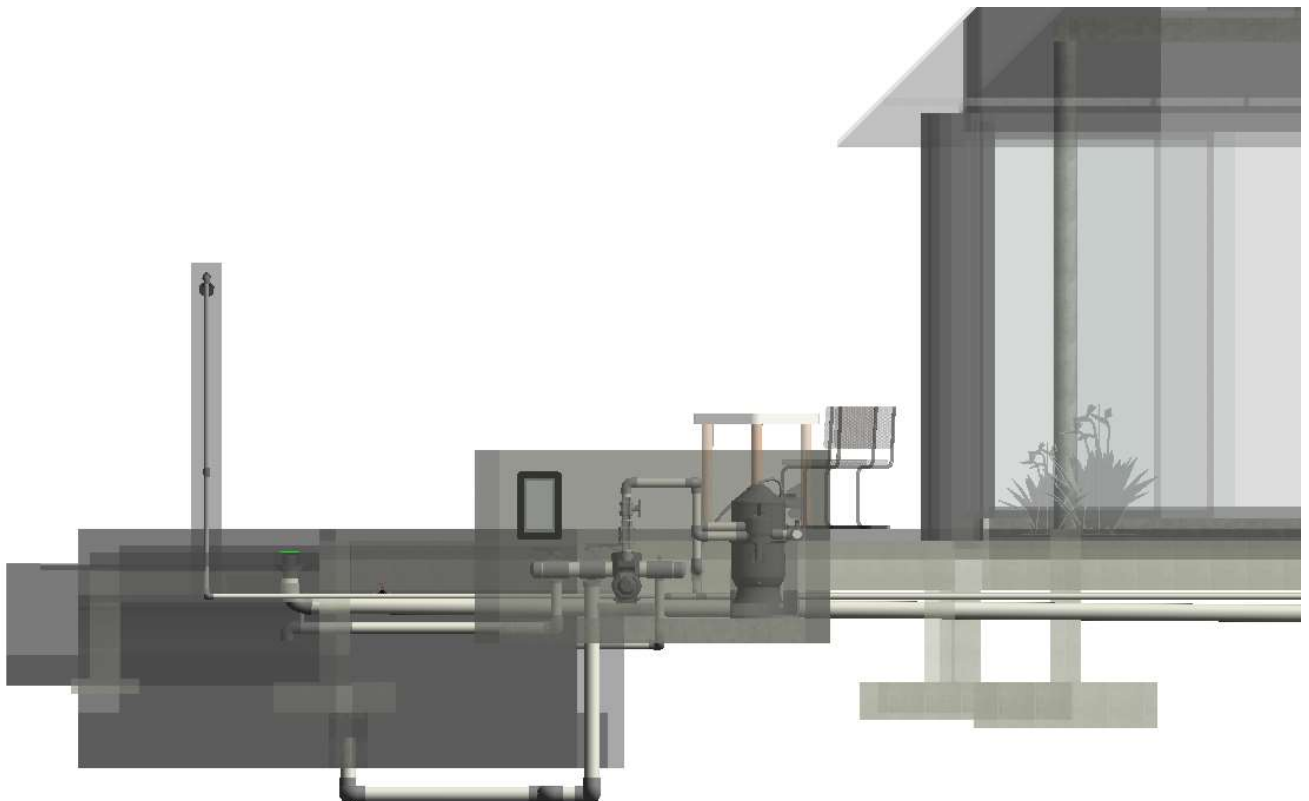
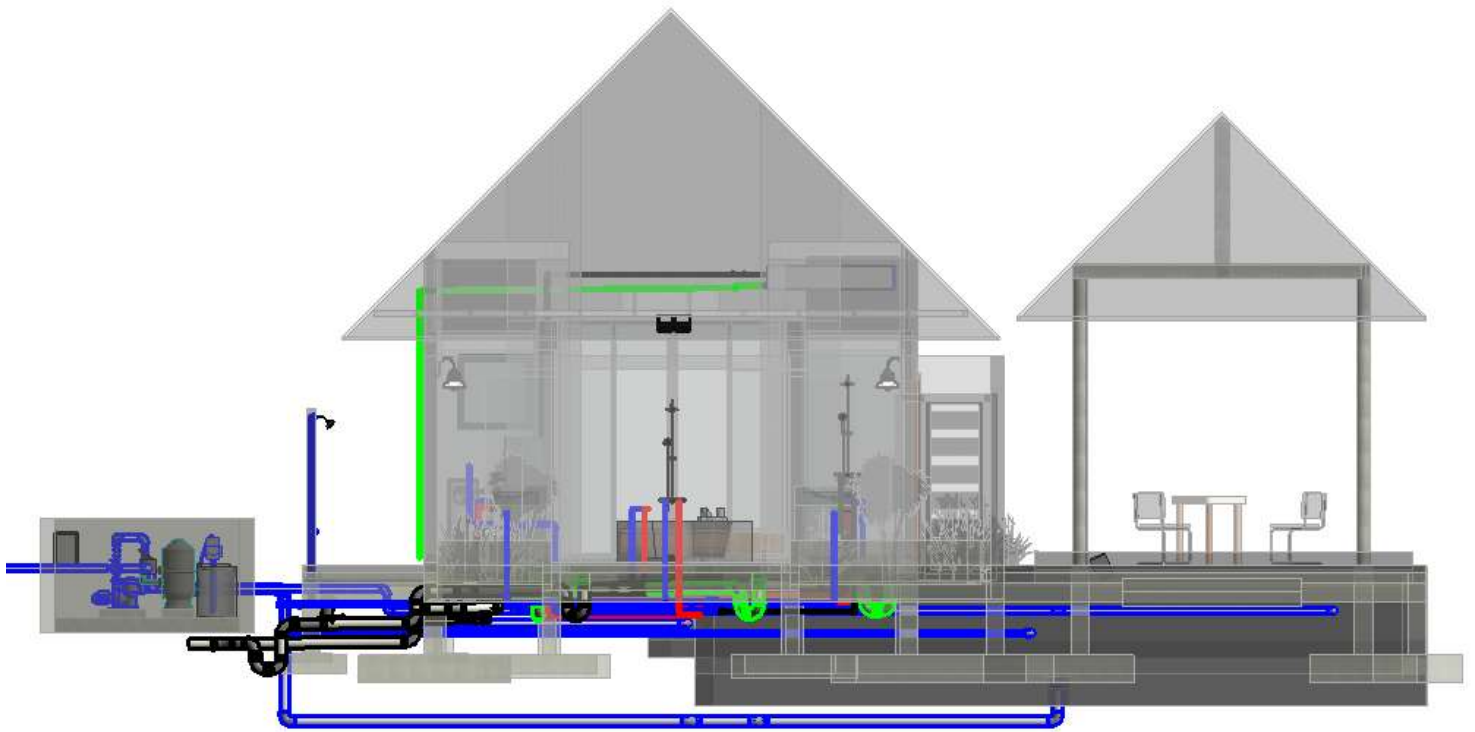
Technical Submittals

Operation and Maintenance Manuals

Instruction Manuals / User Guidance

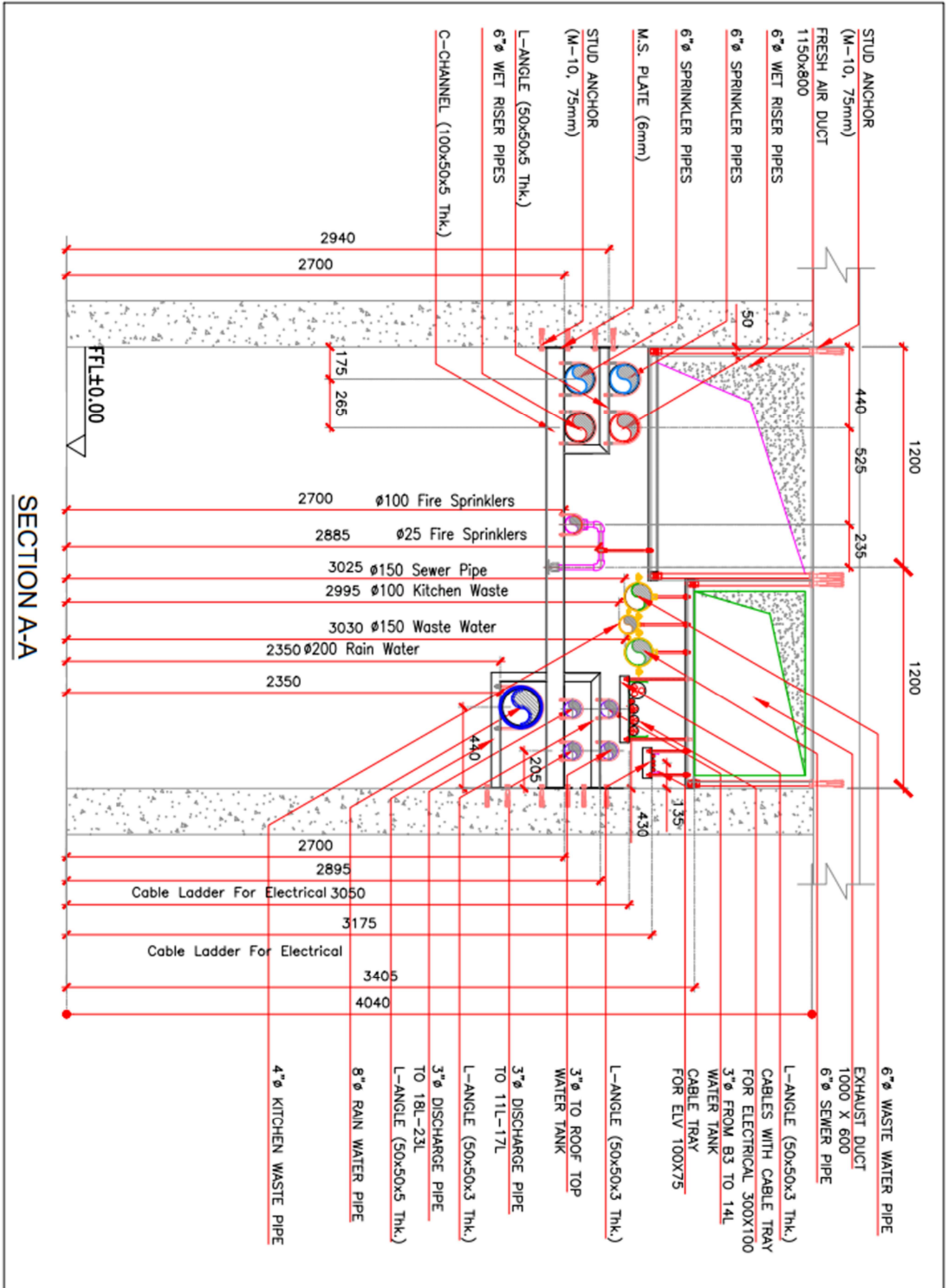
PRECEDENTS

BIM MODELING

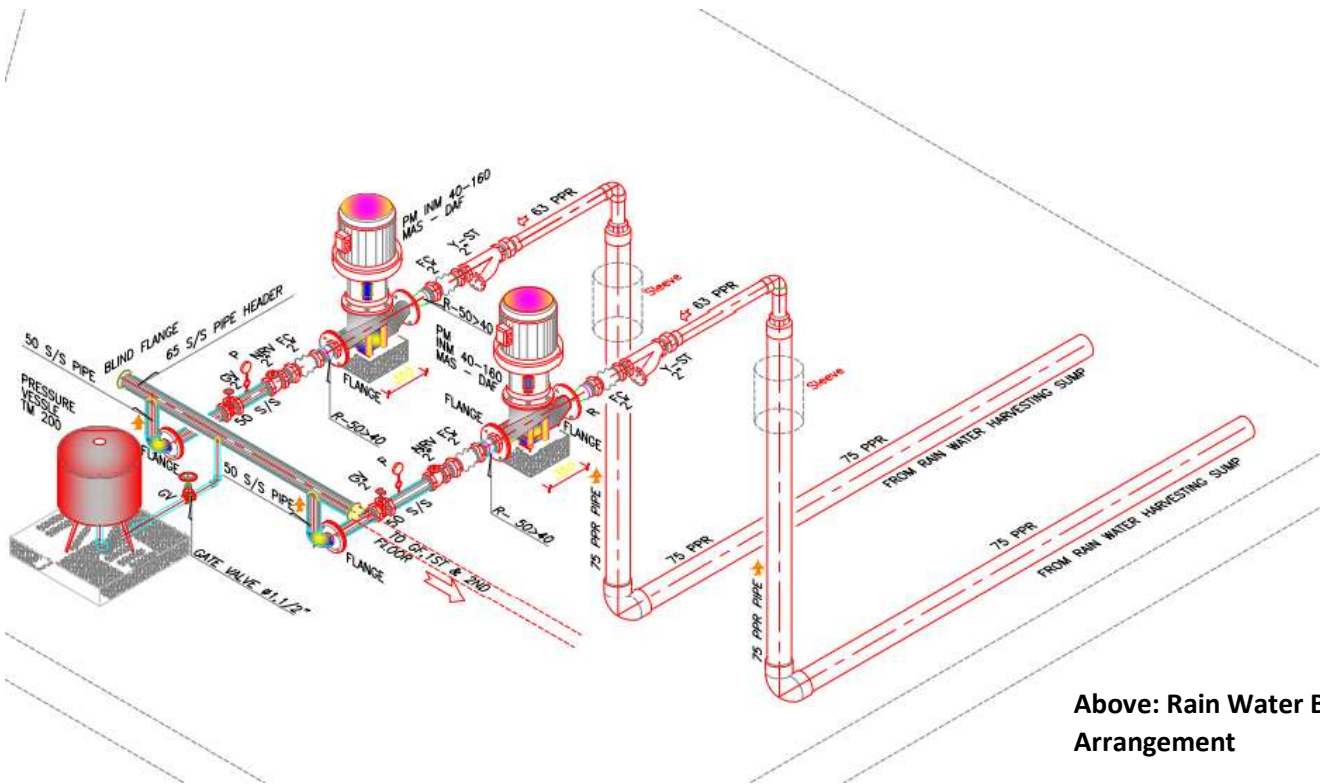


Beach Villa for Pullman Mamutta (Ritz Carlton) Maldives

2D COORDINATION DRAWING - MEP



ISOMETRIC DRAWINGS

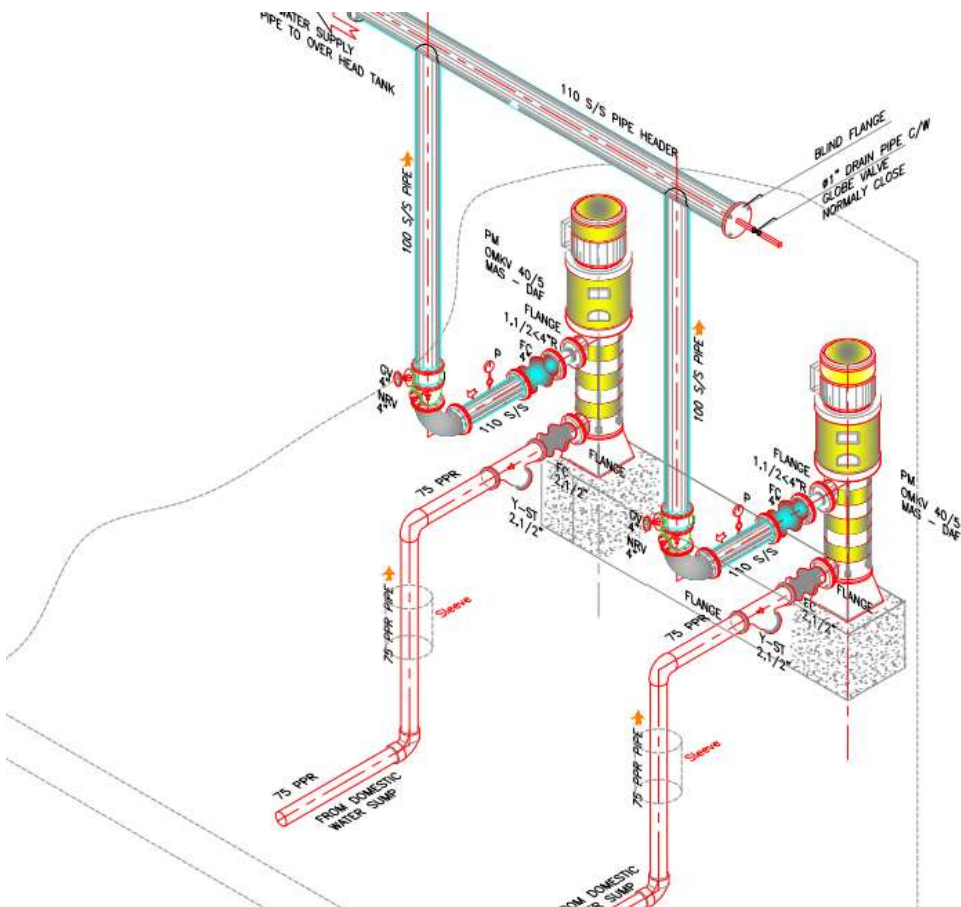


- LEGEND**
- R - REDUCER
 - PL - PLUNTH
 - GV - GATE VALVE
 - NRV - NON RETURN VALVE
 - FC - FLEXIBLE CONNECTION
 - Y-ST - Y" STRAINER
 - P - PRESSURE GAUGE
 - PM - PUMP
 - S/S - STAINLESS STEEL

* ALL DIMENSIONS ARE IN MM

Above: Rain Water Booster Pump Arrangement

Below: Portable Water Transfer Pump Arrangement

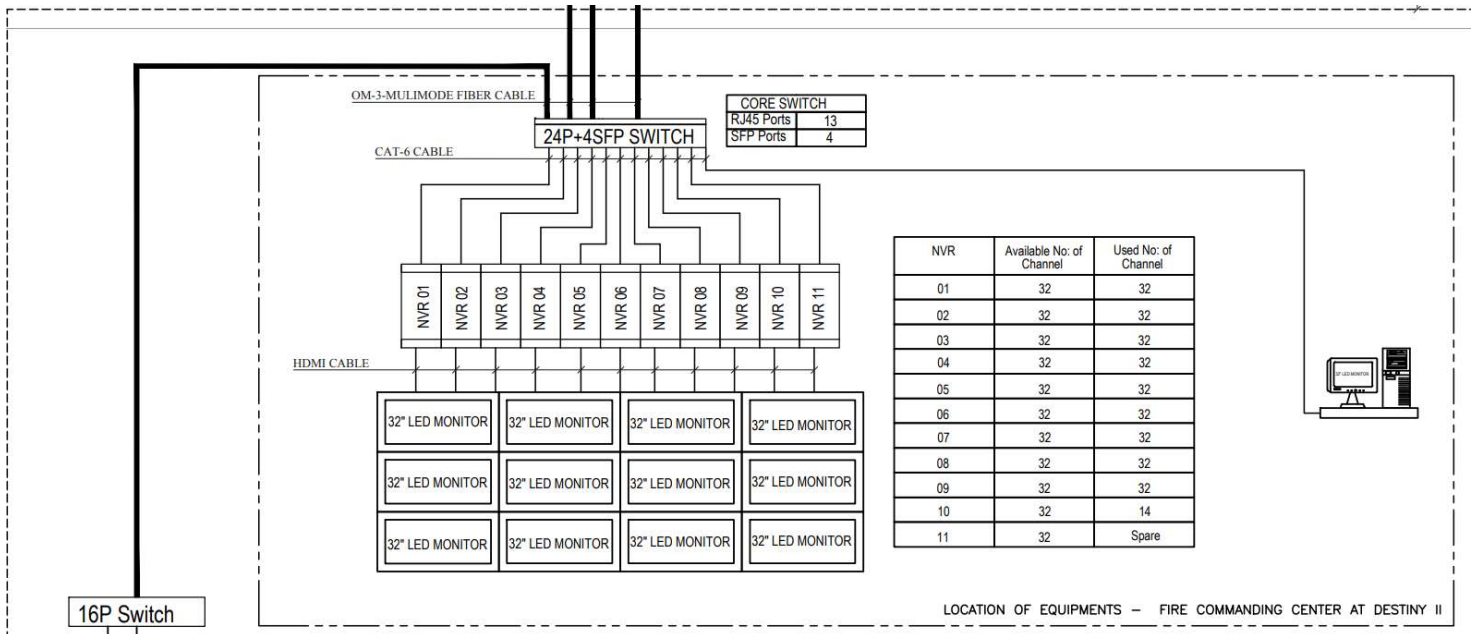
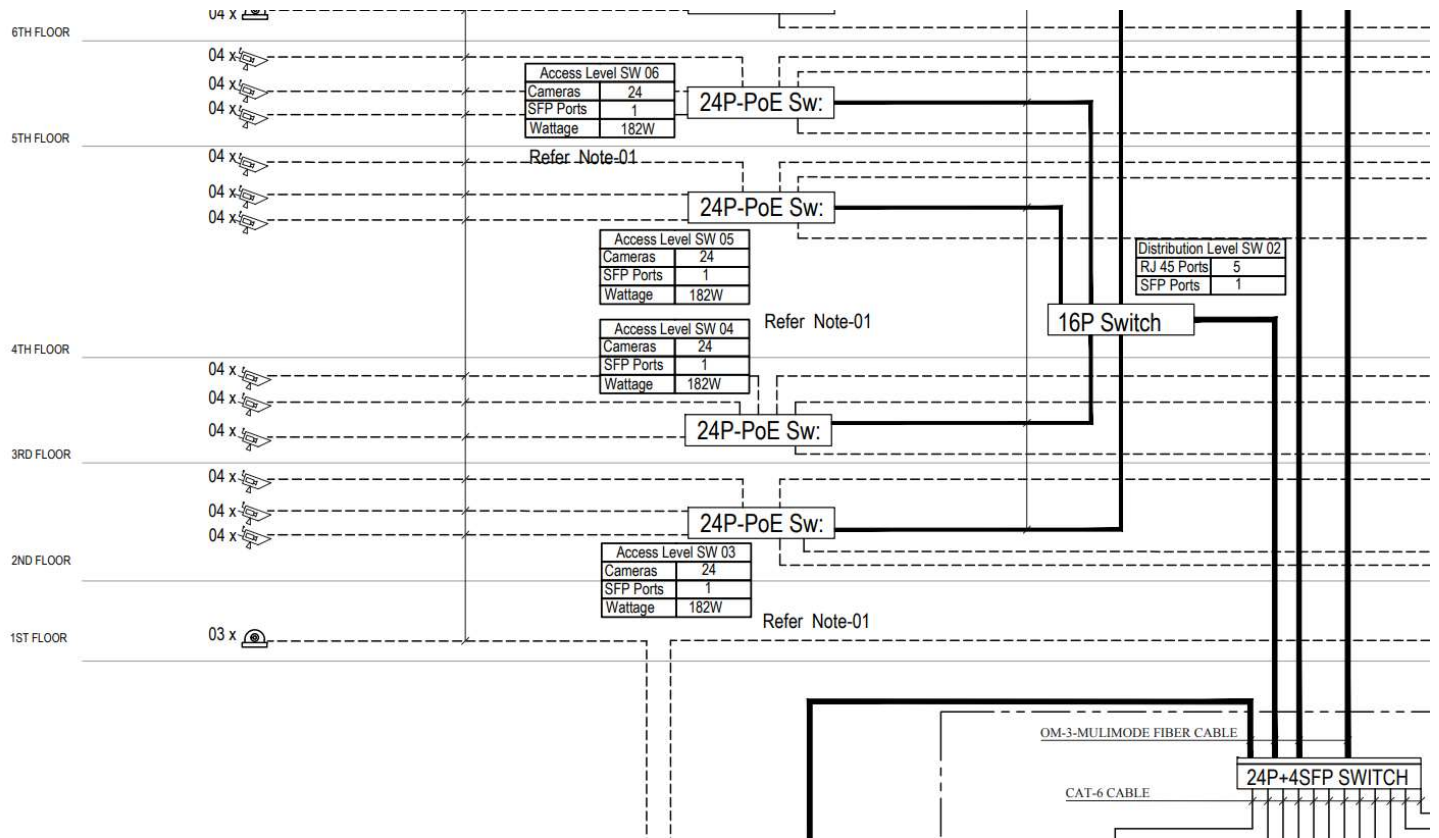


- LEGEND**
- R - REDUCER
 - PL - PLUNTH
 - GV - GATE VALVE
 - NRV - NON RETURN VALVE
 - FC - FLEXIBLE CONNECTION
 - Y-ST - Y" STRAINER
 - P - PRESSURE GAUGE
 - PM - PUMP
 - S/S - STAINLESS STEEL

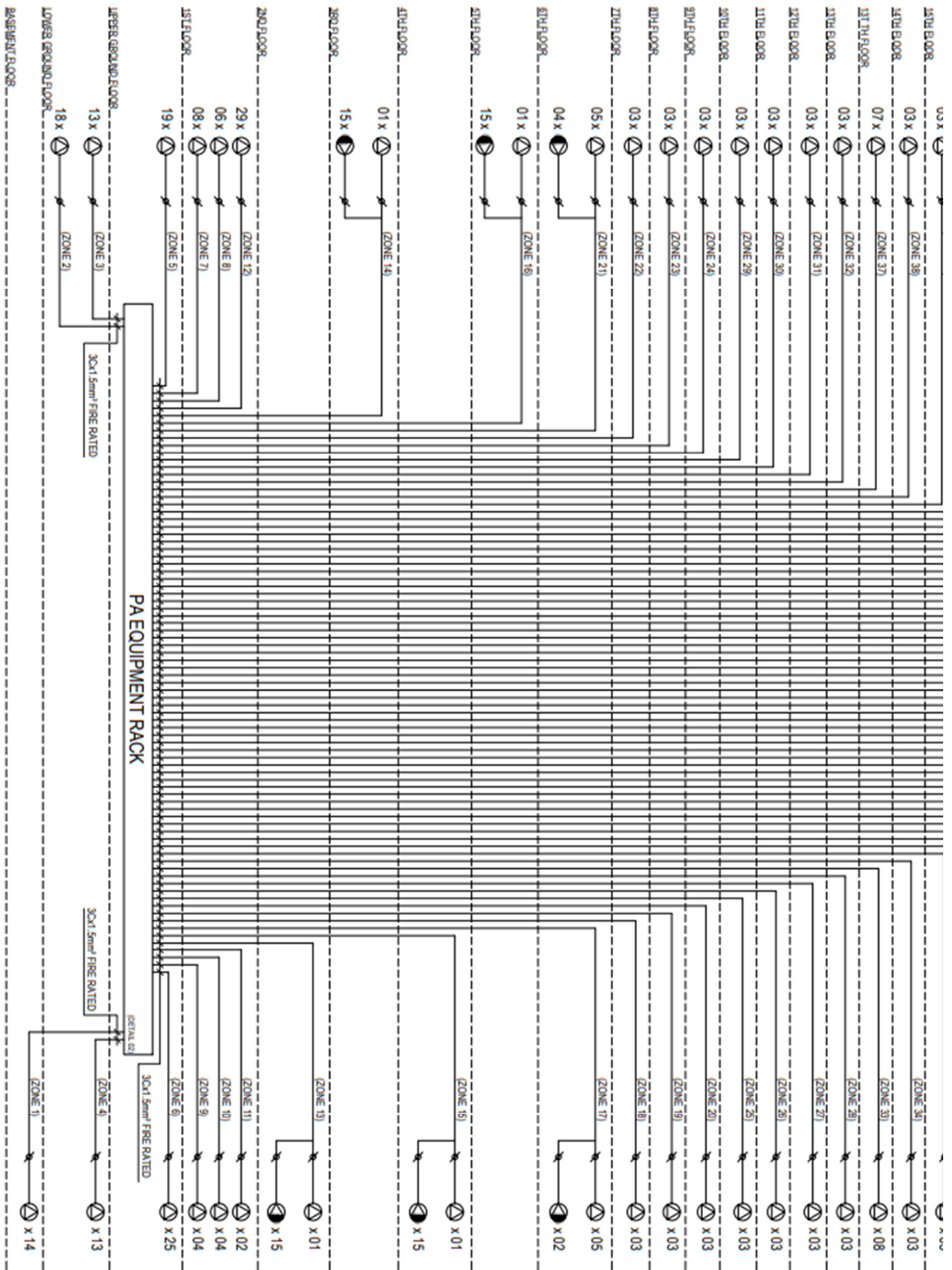
* ALL DIMENSIONS ARE IN MM

AS-BUILT

CCTV – SCHEMATIC DRAWING





PA – SCHEMATIC DRAWING



PA SYSTEM SCHEMATIC DIAGRAM

DRAFTING / MODELLING EXPERIENCE

Project Name	Picture	Shop Drawings (Nos)	As Built Drawings (Nos)
Altair Residencies		1125	1018
Pontiac Resort (Ritz Carlton)		765	810
District Secretariat Colombo		597	558
Pullman Mamutta		220	275
Prime Grand		484	374

SOFTWARE EXPERTISE



CONTACT US

eso@kentengineers.net / +94 742 003 184 / www.kentengineers.net



Corporate Video



Project Video

[Link for Corporate Video](#)

[Link for Project Video](#)